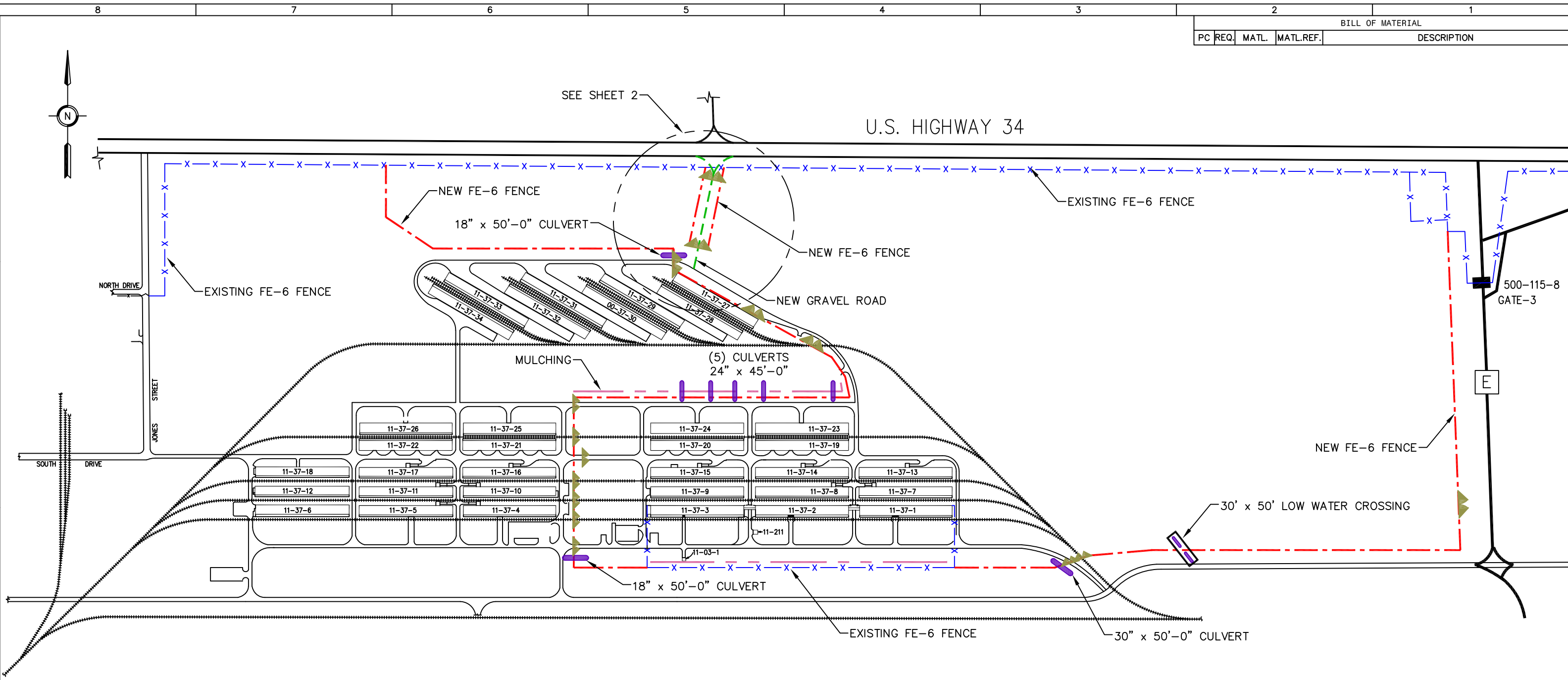
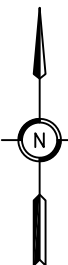
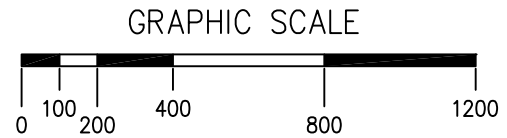


BILL OF MATERIAL				
PC	REQ.	MATL.	MATL. REF.	DESCRIPTION




**- YARD L -**



**LEGEND**

- EXISTING FENCE... - x - x - x - x -
- 10,655 LINEAR FEET OF NEW FE-6 CHAINLINK FENCE... - - - - -
- 550 LINEAR FEET x 24 FOOT WIDE NEW GRAVEL ROAD... - - - - -
- 60 ACRES OF CLEARING/MULCHING... - - - - -
- CULVERTS... ■
- (15) 24'-0" FE-6 GATES... ▲▲

TOLERANCES UNLESS OTHERWISE NOTED	
FRACTIONAL:	_____
DECIMAL:	_____
ANGULAR:	_____
DIMENSIONAL FORMAT: INCHES	
REVISION LOG	
REVISION LEVEL:	DATE:
DESIGN:	BY:



**American Ordnance**  
*We do what we say.®*

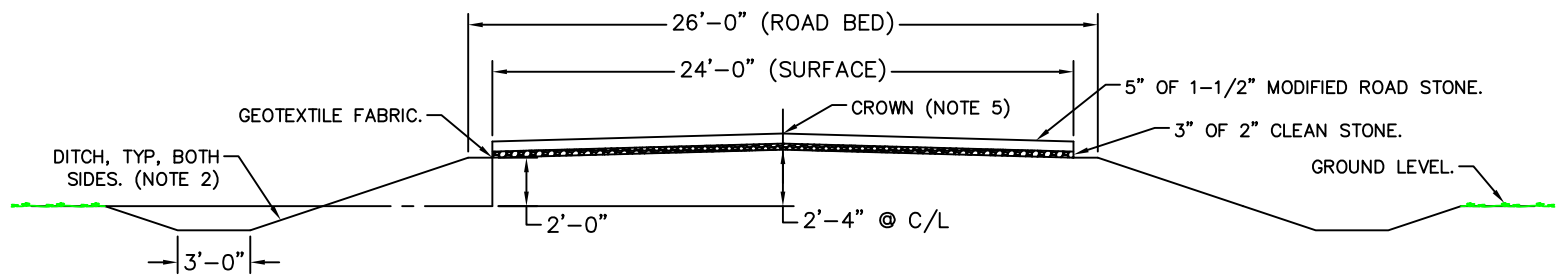
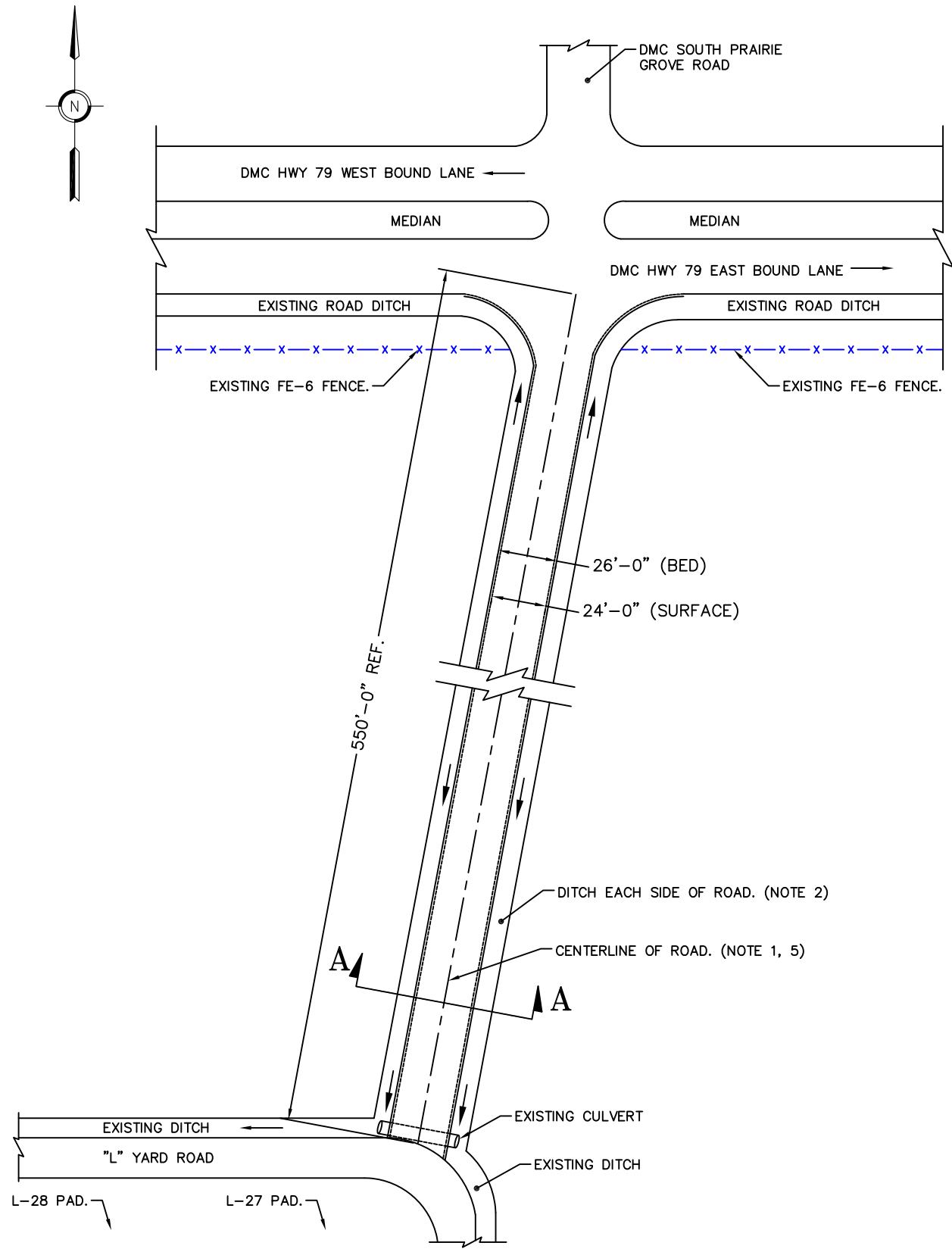
Operator of  
**Iowa Army Ammunition Plant**  
Middletown, Iowa 52638-9701

"L" YARD CERTIFIED SITE ACCESS ROAD			
FILE NO.:	DRAWN: WAGG	DESIGN: BENNETT	DATE: 7-24-18
DWG. NO. YL G U 1500	WBS:	SCALE: GRAPHIC	ITEM: SHT. 1 OF 2

BILL OF MATERIAL				
PC	REQ.	MATL.	MATL.REF.	DESCRIPTION

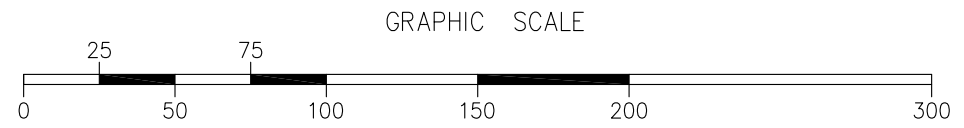
**NOTES:**

- 1.) CENTERLINE OF NEW ROAD EQUALS 550 LINEAR FEET.
- 2.) DITCHES WITH 3'-1" SIDE-SLOPE WITH A 3' FLAT BOTTOM, TYP. BOTH SIDES.
- 3.) 24' DRIVABLE ROAD SURFACE.
- 4.) 26' ROAD BED.
- 5.) 4" CROWN AT CENTERLINE OF ROAD.




**SECTION A-A**  
SCALE: NONE

**ROAD BED DETAIL**  
SCALE: GRAPHIC



TOLERANCES UNLESS OTHERWISE NOTED	
FRACTIONAL:	_____
DECIMAL:	_____
ANGULAR:	_____
DIMENSIONAL FORMAT: INCHES	
REVISION LOG	
REVISION LEVEL:	DATE:
DESIGN:	BY:



**American Ordnance**  
*We do what we say.®*

Operator of  
**Iowa Army Ammunition Plant**  
Middletown, Iowa 52638-9701

"L" YARD CERTIFIED SITE ACCESS ROAD			
FILE NO.:	DRAWN: WAGG	DESIGN: BENNETT	DATE: 7-24-18
DWG. NO.	YL G U 1500	WBS: SCALE: NOTED	ITEM: SHT. 2